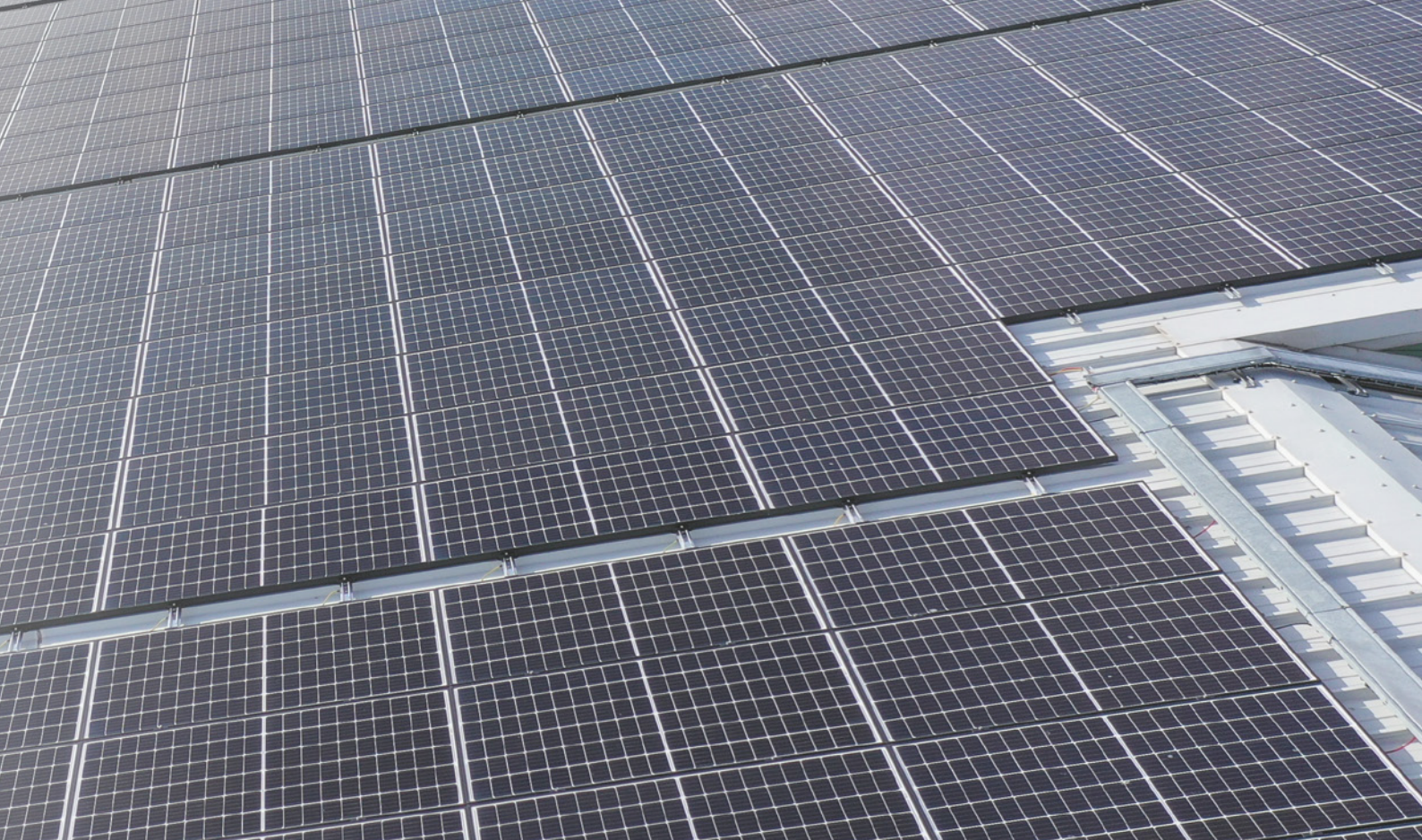
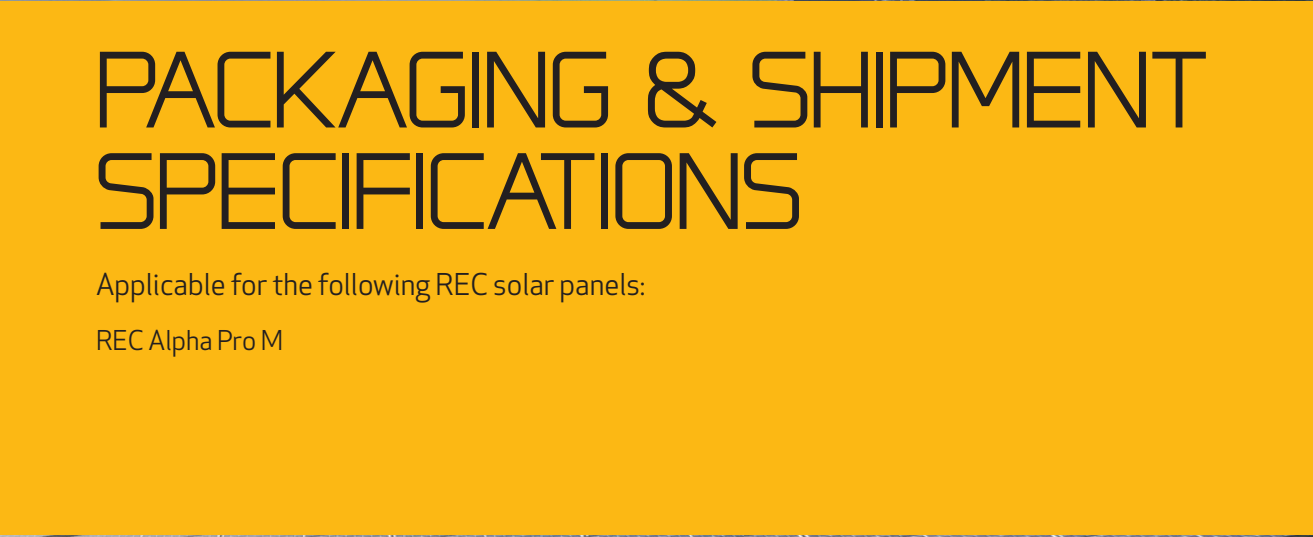


PACKAGING & SHIPMENT SPECIFICATIONS

Applicable for the following REC solar panels:

REC Alpha Pro M



CONTENTS

Introduction.....	3
REC Alpha Pro M Series.....	4

INTRODUCTION

REC believes that the packaging of our products is just as important as the product itself. To ensure our solar panels arrive with our customers in as good condition as possible, REC takes every care to ensure a high quality level of packaging and uses international testing standards to ensure the panels reach their destination in the best condition. Except where specifically stated, the information given on the following pages is relevant to all modules in the product family named and is therefore applicable to all product variants, e.g., different colored frames, backsheets, and/or cell types. The images shown are a generic representation of the instructions regardless of color or exact design.

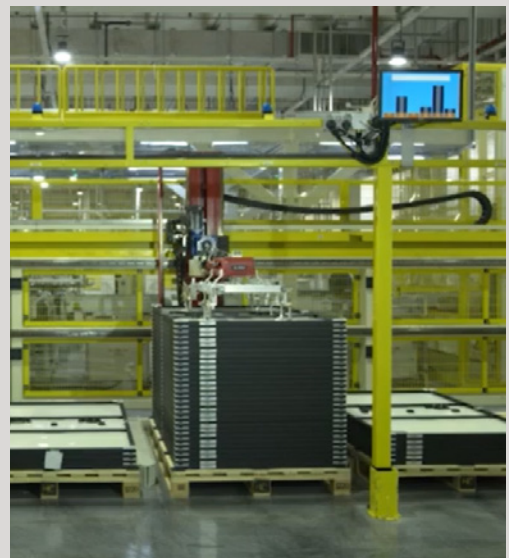


PALLET HANDLING

This document contains instructions concerning the use and handling of pallets of REC solar panels. Following these instructions will ensure that the panels are in the best condition upon arrival at the installation site. Misuse or failure to follow these procedures may lead to damage or injury, and may invalidate the warranty on the product.

QUALITY

REC performs a quality check on all pallets before and during loading. Vehicles will only be loaded if they are deemed safe and serviceable. During transportation, the pallets are stably loaded in protected containers with air bags between them to secure them in position. The freight company and driver are responsible for ensuring suitable load safety for each delivery vehicle. Vehicles without suitable load safety measures will not be loaded. Loading without the use of air bags or loading belts to secure the pallets may lead to damage to the pallet(s) and/or module(s) during transportation which may invalidate the warranty. If using loading belts to secure pallets, ensure these are correctly fitted as over-tightening may cause damage to the modules or pallet(s).



RECYCLING

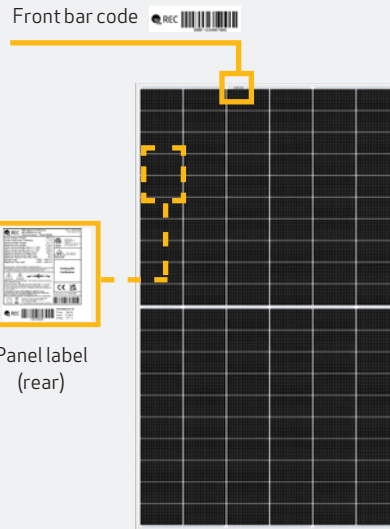
REC makes every effort to ensure the panel packaging is kept to a minimum and that environmentally-friendly materials are used wherever possible. This minimizes waste and discarded items to dispose of at the installation site. The wooden pallets can be re-used or recycled. The paper and cardboard packaging used on REC pallets can be also be widely recycled and the protective wrapping and panel separating blocks are also recyclable in many areas. Please check for all applicable procedures and recycle all packaging and panels according to local guidelines and regulations. REC makes every effort to ensure environmentally-friendly packaging materials are used. Please recycle whenever possible.

REC ALPHA PRO M SERIES

PALLET FRONT VIEW (DOUBLE STACKED)



PANEL IDENTIFICATION



PALLET SHIPMENT DIMENSIONS

Length of pallet:	2225 mm (87.6 in)
Width of pallet:	1340 mm (52.7 in)
Height of single pallet stack:	1205 mm (47.4 in)
Height of double pallet stack:	2410 mm (94.8 in)
Pallet weight:	~42 kg (93 lbs)
Stack weight (pallet + panels):	ca. 1115 kg (2458 lbs)

DELIVERY INFORMATION

Panels per pallet:	33
Panels per 40 ft GP/high cube container:	528 (16 pallets)
Panels per 53 ft truck:	594 (18 pallets)

PALLET SIDE VIEW (DOUBLE STACKED)



PALLET STACKING



DELIVERY DOCUMENTATION

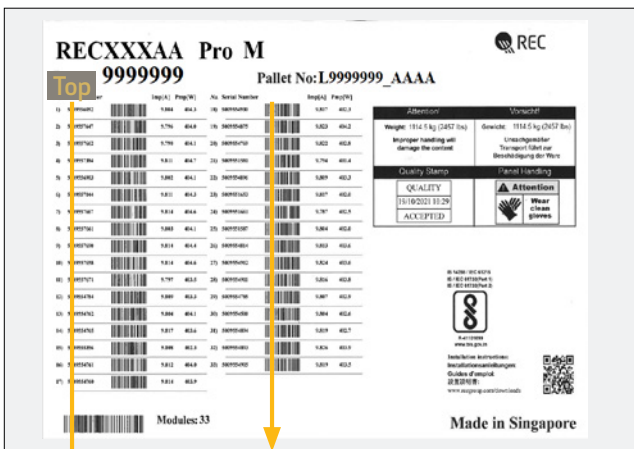
Documentation is located on short side of pallet. Pallet documentation includes:

- Module flash data
- Serial number
- Product name
- Watt class

PACKAGING MATERIAL

Pallet:	Wood
Foam pad:	Polyurethane Polyether Polyol
Top cover:	Corrugated cardboard
Edge protectors:	Core board - Kraft
Corner pieces and spacers:	HDPE

PACKAGING DOCUMENTATION



- Pallet No. 1 is the top module in a stack
- Pallet No. 33 is the lowest module in a stack
- Pallet documentation shows:
 - Module serial number
 - Module bar code
 - Manufacturing date
 - Electrical data (I_{MP} , P_{MP})

STORAGE AND TRANSPORTATION

Stacking for storage:	2 pallets max
Stacking for transportation:	2 pallets max

Note: When double stacking pallets, ensure the upper pallet sits securely on the edge protector to avoid damage to the lower pallet during transportation or handling

Note: Pallets delivered stacked are not bound together

FORK LENGTHS FOR TRANSPORTATION

		Single stack only
Forklift	Long side	1.2 m (48 in) Loading & unloading of container only
	Short side	≥ 1.8 m (72 in)
Pallet jack	Long side	X
	Short side	≥ 1.8 m (72 in)

Note: Forks must be spaced a minimum of 500 mm apart. Handlers must ensure that vehicles used for REC pallets can handle the specified load safely.

Note: 1.2m (48 in) fork must be used when loading and unloading of container to prevent overfork and damage to pallets.

Note: It is advised to only fork one pallet at a time to ensure safety and visibility when handling.

Note: Specifications subject to change without notice



REC SOLAR PTE. LTD.
20 TUAS SOUTH AVENUE 14
SINGAPORE 637312
SINGAPORE
Tel: +65 6495 9228
Mail: post@recgroup.com

www.recgroup.com